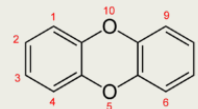


TODAY'S TREATMENT:

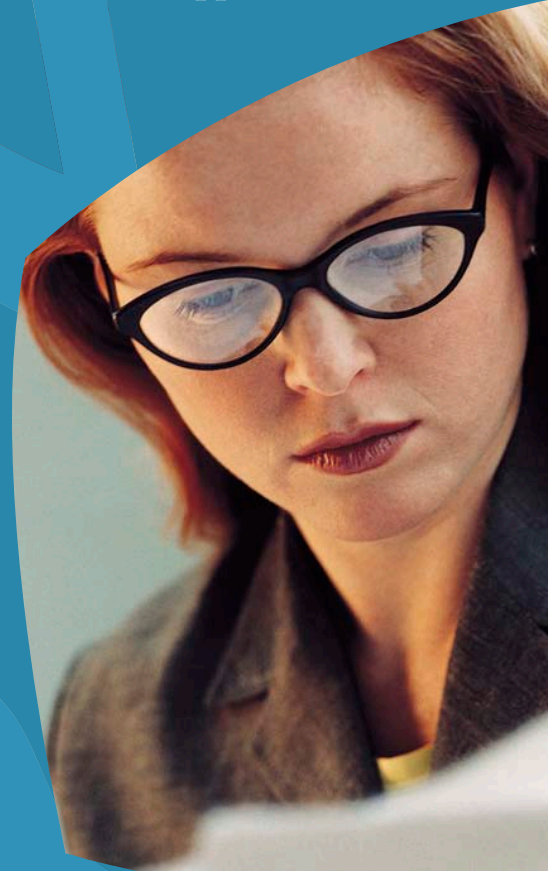
- × **Thionyl Chloride:** US DOT, EPA, and State and local regulations should be followed to ensure that removal, and disposal of this substance are conducted in accordance with existing regulations.
- × **Waxes, oils, naphthenes, and aniline:** Should be handled as hazardous waste and sent to a RCRA approved incinerator or disposed in a RCRA approved waste facility.
- × **Dodecyl:** Should be managed in an appropriate and approved waste disposal facility-not a listed RCRA hazardous waste.
- × **Trichlorophenol:** Must be disposed of in accordance with federal, state, and local environmental control regulations.
- × **Benzoyl chlorides and benzo-trichlorides:** Should be handled as hazardous waste and sent to a RCRA approved waste facility.
- × **Metal Chlorides:** Should be treated at an approved waste facility where the metals will be precipitated out of the waste products.
- × **Liquid disulfides:** Controlled incineration along with use of sulfur dioxide scrubber at an approved waste facility.
- × **Hexachlorocyclohexane:** Treatment by use of deemulsification, sorption, and filtration in combination with chemical and biological degradation at an approved treatment facility.
- × **Chlorobenzenes:** Disposal by liquid injection, rotary kiln, or fluidized bed.
- × **Benzylchlorides:** Should be handled as hazardous waste and sent to a RCRA approved waste facility.
- × **Sodium Sulfide:** Should be managed in an approved waste facility-not listed RCRA hazardous waste.

Lisa Althoff
Sara Minnigerode
Cecilia Burgess
Siena Radford



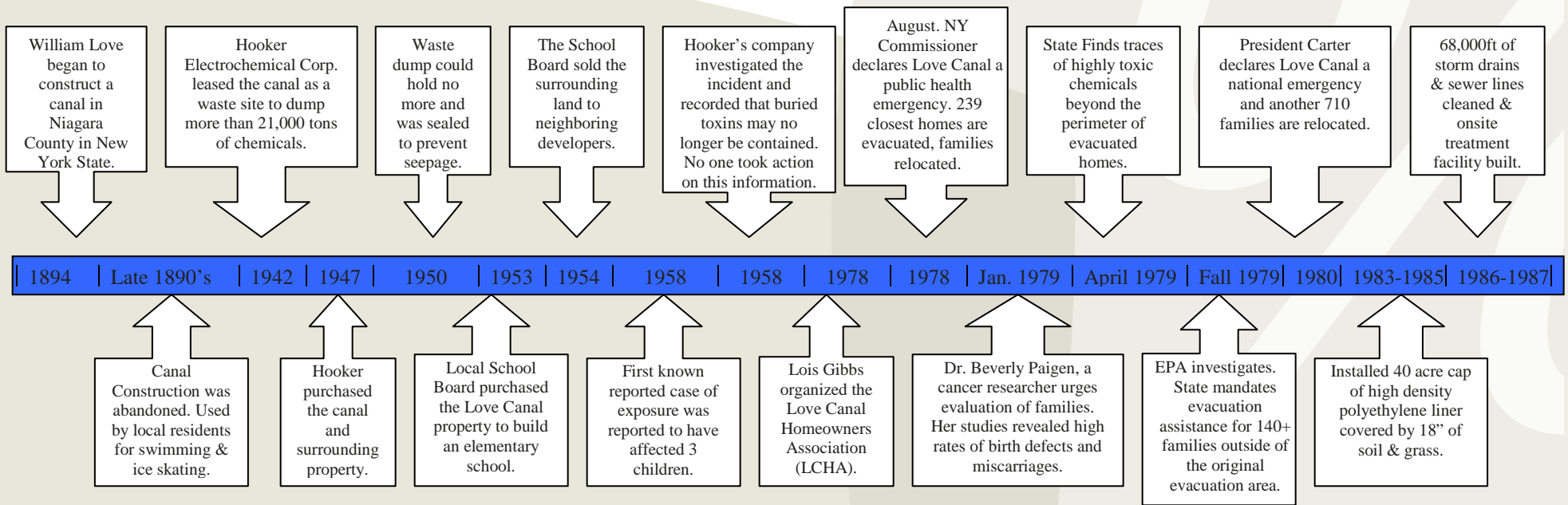
LOVE CANAL

What Happened?
Was anything learned?
What happens now?



CHEMICALS THAT WERE DUMPED:

- ✗ Thionyl Chloride
- ✗ Waxes, oils, naphthalenes, anilina
- ✗ Dodecyl
- ✗ Trichlorophenol
- ✗ Benzoyl chlorides and benzo-trichlorides
- ✗ Metal Chlorides
- ✗ Liquid Disulfides
- ✗ Chlorotoluenes
- ✗ Hexachlorocyclohexane
- ✗ Chlorobenzenes
- ✗ Benzylchlorides
- ✗ Sodium Sulfide



- 1987-1989: Black & Bergholtz creeks dredged of 14,000 cubic yards of sediment, stored at Niagara Falls Main Plant.
- Nov 1988: 10 Cubic yards of Dioxin contaminated soil were excavated and stored on site in drums.
- 1993: Sewers and pipelines were replaced, cap repaired.
- 1998-1999: Stored contaminants sent from Niagara Falls main plant for destruction to various sites across the US.
- Sep 30, 2004: EPA removes Love Canal from the Superfund National Priorities List.

“Love Canal, along with Times Beach, Missouri, share a special place in United States environmental history as the two sites that in large part lead to the Comprehensive Environmental Response Compensation and Liability Act (CERCLA). CERCLA is much more commonly referred to as ‘Superfund’ because of the fund established within the act to help the clean up of locations like Love Canal.”